

Items Supplied >

- 1 – Billet License Plate Mount
- 1 – Bracket
- 1 – Plastic Backing Plate
- 4 – 10-32 F.H.C. Screw
- 2 – 10-32 Nylock Nuts
- 2 – M10 Nuts
- 1 – M6 S.H.C. Screw

Application(s) >

- VN1500P MEAN STREAK 02-03
- VN1600B MEAN STREAK 04-UP
- VN1600D NOMAD 05-UP

Instruction Manual >

05-9004

Page 1 of 2

Read all instructions carefully and completely before installing your new License Plate Mount.

1. Remove the wire cover and four screws. Set them aside for reinstallation. (Refer to fig. 2)
2. Disconnect the rear turn signal and license plate light wires from the harness under the fender making sure to note which turn signal was connected to which connector.
3. Remove the two screws holding on the splash guard and then the splash guard from the fender. Set the screws aside for reinstallation. Remove the turn signals from the guard.
4. Align the holes in the supplied bracket with the holes in the brackets where the splash guard was attached and finger tighten the two stock M6 bolts, removed in step 4, into the bracket as shown in figure 1.
5. Align the billet mount with the bracket installed in step 5 (see figure 1). Insert a turn signal into each pocketed hole of the mount so the stud from the turn signal goes thru the mount and bracket. Slide a supplied M10 nut over each turn signal wire and finger tighten the nut onto the stud.
6. Reconnect the turn signal wires with their original wire harness. Test the turn signals to make sure they are connected correctly.
7. Locate the slotted hole on the bottom of the mount and insert the supplied M6 screw thru the mount and finger tighten into the bracket. (See figure 1)
8. Modify the wire cover removed in step 1 so it looks like fig 2.
9. Reinstall the cover by finger tightening the original screws making sure not to pinch the wires.
10. Align the billet mount with the edge of the rear fender so the mount is flush with the outside edge of the fender and the turn signals are perpendicular to the length of the motorcycle before tighten the six screws (installed in steps 4 & 9), two M10 nuts and M6 screw.
11. Place your license plate between the supplied frame and backing plate and install two 10-32 screws thru the bottom holes in the frame and install a 10-32 nut on the backside as shown in figure 1.
12. Slide the frame, license plate and backing plate into the notch in the billet mount and align the hole in the frame with the mount (see fig 1). Install two 10-32 screws thru top holes in the frame and tighten.

** Cobra recommends you always wear a helmet while riding. Please never operate your motorcycle while under the influence of alcohol and/or drugs. Enjoy the new look of your motorcycle and please ride safely.*

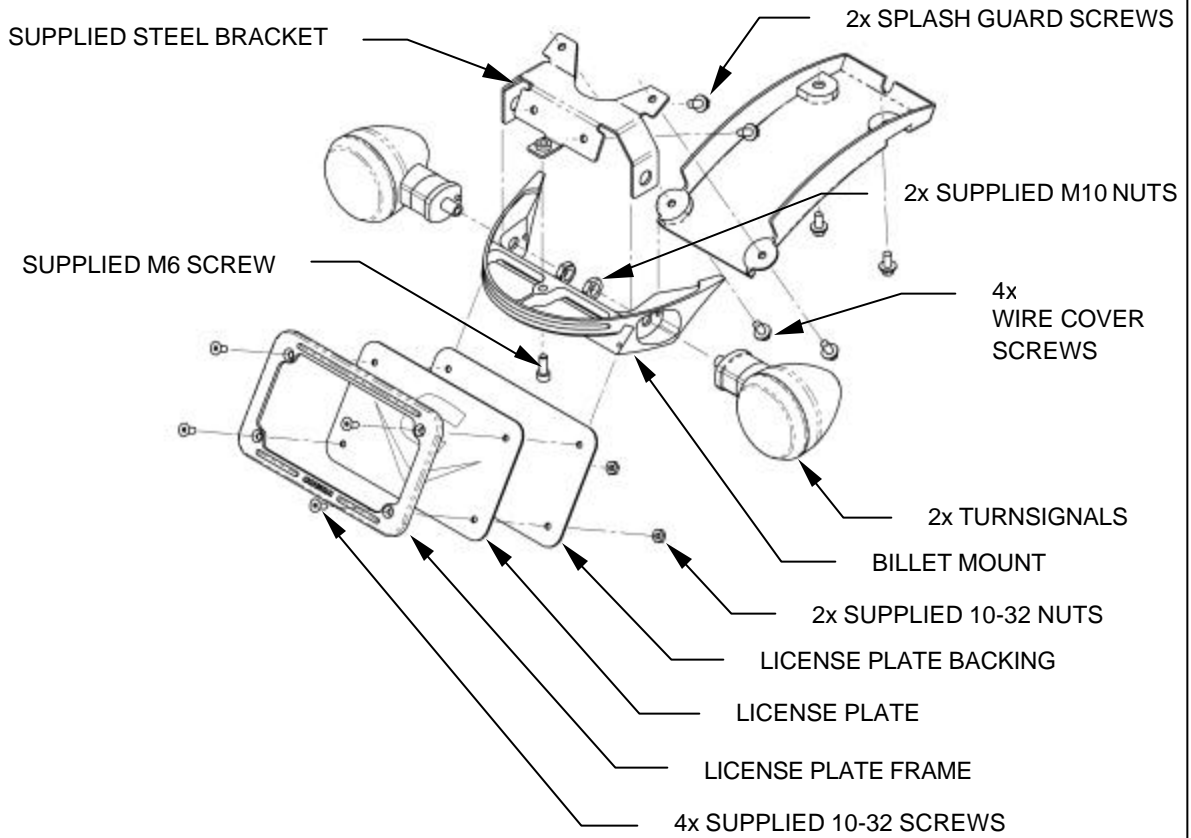


FIGURE 1

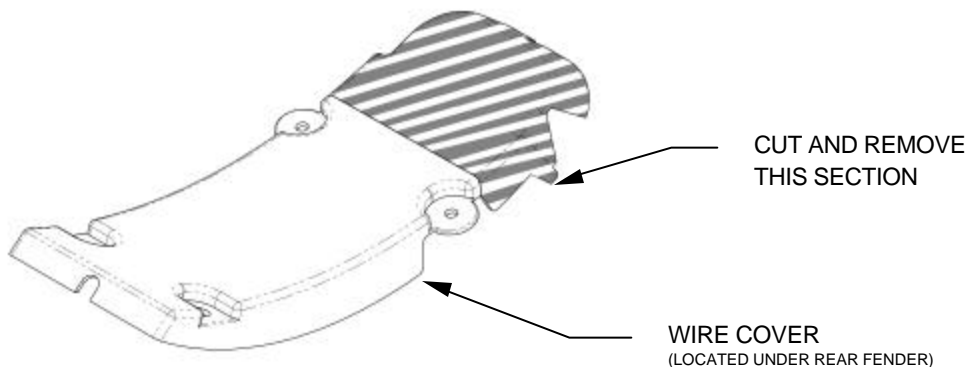


FIGURE 2